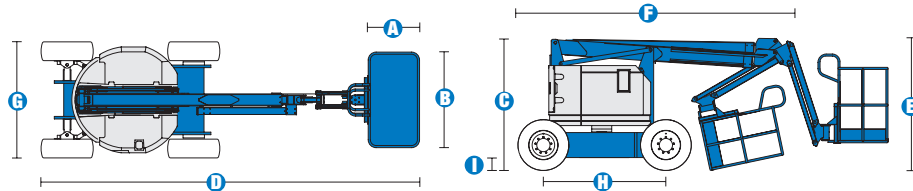
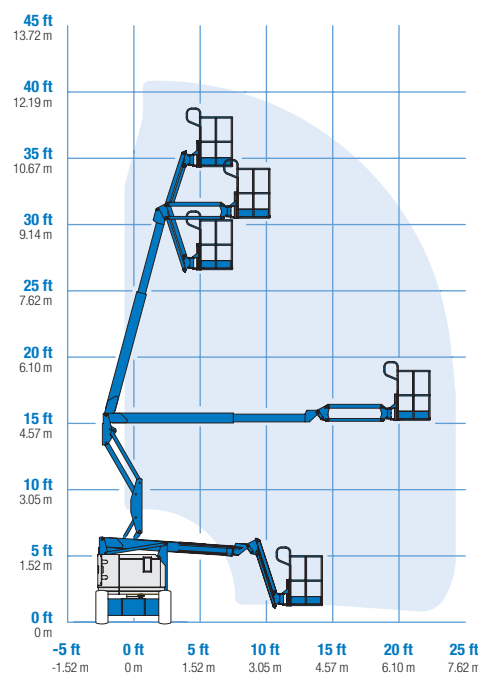


Specifications



RANGE OF MOTION Z™-34/22 DC/Bi



MODELS	Z™-34/22 DC		Z™-34/22 Bi-Energy	
	US	Metric	US	Metric
Working height maximum*	40 ft 6 in	12.52 m	40 ft 6 in	12.52 m
Platform height maximum	34 ft 6 in	10.52 m	34 ft 6 in	10.52 m
Horizontal reach maximum	22 ft 3 in	6.78 m	22 ft 3 in	6.78 m
Up and over clearance - at platform at jib	15 ft	4.57 m	15 ft	4.57 m
	14 ft 11 in	4.55 m	14 ft 11 in	4.55 m
A Platform length	2 ft 6 in	.76 m	2 ft 6 in	.76 m
B Platform width	4 ft 8 in	1.42 m	4 ft 8 in	1.42 m
C Height - stowed	6 ft 7 in	2.00 m	6 ft 7 in	2.00 m
D Length - stowed	18 ft 6 in	5.64 m	18 ft 6 in	5.64 m
E Storage height	7 ft 5 in	2.26 m	7 ft 5 in	2.26 m
F Storage length	13 ft 5 in	4.08 m	13 ft 5 in	4.08 m
G Width	5 ft 8 in	1.73 m	5 ft 8 in	1.73 m
H Wheelbase	6 ft 2 in	1.88 m	6 ft 2 in	1.88 m
I Ground clearance - center	6 in	.15 m	6 in	.15 m

PRODUCTIVITY

Lift capacity	500 lbs	227 kg	500 lbs	227 kg
Platform rotation	180°		180°	
Vertical jib rotation	139°		139°	
Turntable rotation	355° non-continuous		355° non-continuous	
Turntable tailswing	zero		zero	
Drive speed - stowed	4.0 mph	6.4 km/h	4.0 mph	6.4 km/h
Drive speed - raised**	0.6 mph	1.0 km/h	0.6 mph	1.0 km/h
Gradeability - stowed***	30%		30%	
Turning radius - inside	5 ft 9 in	1.75 m	5 ft 9 in	1.75 m
Turning radius - outside	13 ft 1 in	3.98 m	13 ft 1 in	3.98 m
Controls	24 V DC proportional		24 V DC proportional	
Tires - air filled	9 x 14.5 in		9 x 14.5 in	

POWER

Power Source	48 V DC (eight 6 V batteries 315 Ah capacity)	48 V DC (eight 6 V batteries 315 Ah capacity) with Kubota 12 Hp (8.9 kw) diesel driven alternator
Auxiliary Power Unit	24 V DC	24 V DC
Hydraulic Tank Capacity	4 gal 15.1 L	4 gal 15.1 L

WEIGHT****

	11,000 lbs 4,990 kg	12,000 lbs 5,443 kg
--	---------------------	---------------------

STANDARDS COMPLIANCE

ANSI A92.5, CSA B354.4, CE Compliance, AS 1418.10, PB-10-611-03

* The metric equivalent of working height adds 2 m to platform height. U.S. adds 6 ft to platform height.
 ** In lift mode *(platform raised), the machine is designed to operate on firm, level surfaces only.
 *** Gradeability applies to driving on slopes. See operator's manual for details regarding slope ratings.
 **** Weight will vary depending on options and/or country standards.